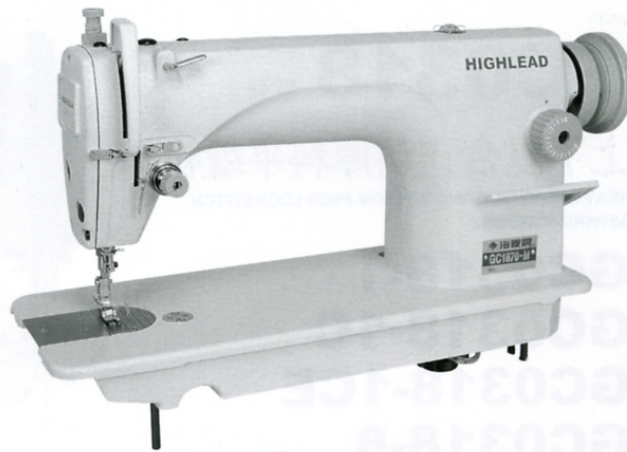


MODEL

GC1870-M

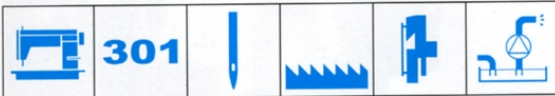
高速单针平缝机

HIGH SPEED SINGLE NEEDLE LOCKSTITCH SEWING MACHINE



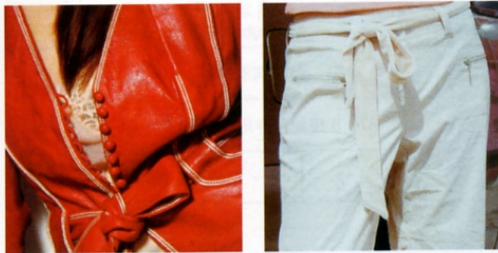
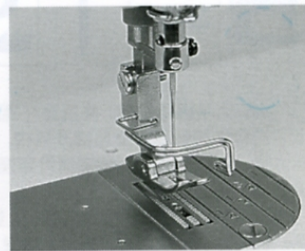
Highlead Canada
www.highleadcanada.com

GC1870-M 高速单针平缝机



本机是海菱平缝机系列中的新款经济型产品。外形设计新颖时尚，表面色泽流行悦目。操作方便性能可靠，调整维护简单快捷。运转轻滑经久耐用，适用范围宽泛，可用于各种薄型或中等厚度的缝料，如各种服装、床上用品、家居布艺等。

This model is a new and economical product of Highlead brand lockstitch sewing machine series. It is designed with the features of a new appearance, fashionable color, reliable performance, easy operation, simplified adjustment and maintenance, smooth running, durable service, and wide application range. It is available for stitching all kinds of garments, bedding goods, upholstery, etc of light or medium heavy weight fabrics.



最高缝速 Max. sewing speed		5000 r.p.m.
线迹长度 Stitch length		0 - 4 mm
针杆行程 Needle bar stroke		31.8 mm
压脚提升 Presser foot lift	手动 By hand	10 mm
	膝控 By knee	13 mm
机针 Needle size		DB x 1 14 [#]
送布牙 Feed dog		4 列齿 4 rows of teech
旋梭 Rotating hook		全自动润滑旋梭 Auto lubricated hook
润滑方式 Lubrication		自动润滑 Auto lubricated
电动机 Motor		370 瓦缝纫机专用电机 370W Clutch motor